

MMP13 Antibody



PACO06645

Product Information

Size:

50ug

Reactivity:

Human

Source:

Rabbit

Isotype:

IgG

Applications:

ELISA, WB, IHC, IF

Recommended dilutions:

ELISA:1:40000, WB:1:500-1:2000,
IHC:1:100-1:300, IF:1:200-1:1000

Protein Background:

Gene ID:

MMP13

Uniprot

P45452

Synonyms:

MMP13; Collagenase 3; Matrix metalloproteinase-13; MMP-13

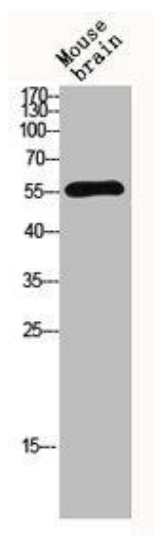
Immunogen:

Synthesized peptide derived from the N-terminal region of human MMP-13.

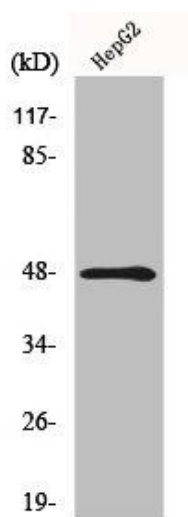
Storage:

Liquid in PBS containing 50% glycerol, 0.5% BSA and 0.02% sodium azide.

Product Images



Western blot analysis of mouse-brain lysis using MMP-13 antibody.



Western Blot analysis of HepG2 cells using MMP-13 Polyclonal Antibody.