

MRE11A Antibody



PACO06650

Product Information

Size:

50ug

Reactivity:

Human, Mouse, Rat, Monkey

Source:

Rabbit

Isotype:

IgG

Applications:

ELISA, WB, IHC

Recommended dilutions:

ELISA:1:20000, WB:1:500-1:2000,
IHC:1:100-1:300

Protein Background:

Gene ID:

MRE11

Uniprot

P49959

Synonyms:

MRE11A; HNGS1; MRE11; Double-strand break repair protein MRE11A; Meiotic recombination 11 homolog 1; MRE11 homolog 1; Meiotic recombination 11 homolog A; MRE11 homolog A

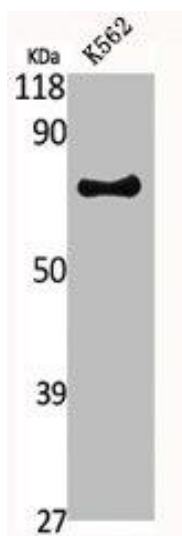
Immunogen:

Synthesized peptide derived from human MRE11 around the non-phosphorylation site of S264.

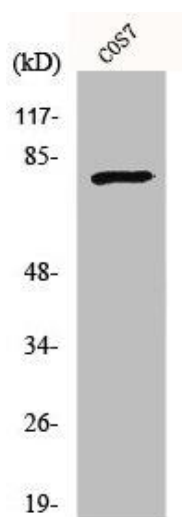
Storage:

Liquid in PBS containing 50% glycerol, 0.5% BSA and 0.02% sodium azide.

Product Images



Western Blot analysis of K562 cells using MRE11 Polyclonal Antibody.



Western Blot analysis of COS7 cells using MRE11 Polyclonal Antibody.