

ABCC3 Antibody



PACO06651

Product Information

Size:

50ug

Reactivity:

Human

Source:

Rabbit

Isotype:

IgG

Applications:

ELISA, WB

Recommended dilutions:

ELISA:1:5000, WB:1:500-1:2000

Protein Background:

Gene ID:

ABCC3

Uniprot

O15438

Synonyms:

ABCC3; CMOAT2; MLP2; MRP3; Canalicular multispecific organic anion transporter 2; ATP-binding cassette sub-family C member 3; Multi-specific organic anion transporter D; MOAT-D; Multidrug resistance-associated protein 3

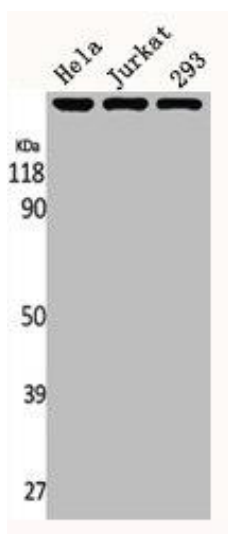
Immunogen:

Synthesized peptide derived from the Internal region of human MRP3.

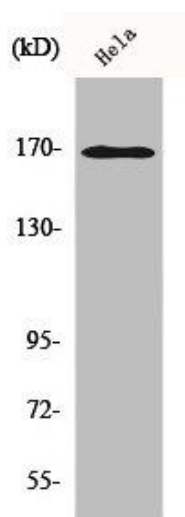
Storage:

Liquid in PBS containing 50% glycerol, 0.5% BSA and 0.02% sodium azide.

Product Images



Western Blot analysis of HELA K562 293 cells using MRP3 Polyclonal Antibody.



Western Blot analysis of HepG2 cells using MRP3 Polyclonal Antibody.