

MRPS22 Antibody



PACO06656

Product Information

Size:

50ug

Reactivity:

Human, Monkey

Source:

Rabbit

Isotype:

IgG

Applications:

ELISA, WB, IHC, IF

Recommended dilutions:

ELISA:1:40000, WB:1:500-1:2000,
IHC:1:100-1:300, IF:1:200-1:1000

Protein Background:

Gene ID:

MRPS22

Uniprot

P82650

Synonyms:

MRPS22; C3orf5; RPMS22; GK002; 28S ribosomal protein S22; mitochondrial; MRP-S22; S22mt

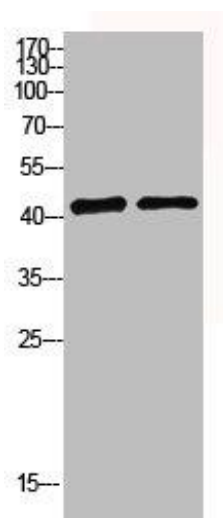
Immunogen:

Synthesized peptide derived from the Internal region of human MRP-S22.

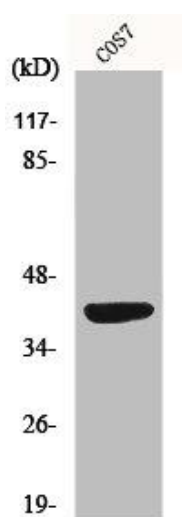
Storage:

Liquid in PBS containing 50% glycerol, 0.5% BSA and 0.02% sodium azide.

Product Images



Western blot analysis of mouse-brain 293T lysis using MRP-S22 antibody.



Western Blot analysis of COS7 cells using MRP-S22 Polyclonal Antibody.