

# MUC13 Antibody



PACO06661

---

## Product Information

**Size:**

50ug

**Reactivity:**

Human

**Source:**

Rabbit

**Isotype:**

IgG

**Applications:**

ELISA, WB, IHC, IF

**Recommended dilutions:**

ELISA:1:20000, WB:1:500-1:2000,  
IHC:1:100-1:300, IF:1:200-1:1000

**Protein Background:****Gene ID:**

MUC13

**Uniprot**

Q9H3R2

**Synonyms:**

MUC13; DRCC1; RECC; Mucin-13; MUC-13; Down-regulated in colon cancer 1

**Immunogen:**

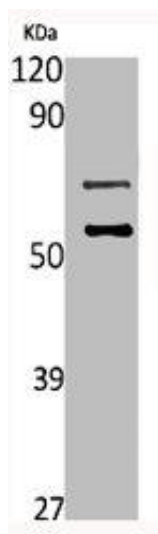
Synthesized peptide derived from the C-terminal region of human Mucin 13.

**Storage:**

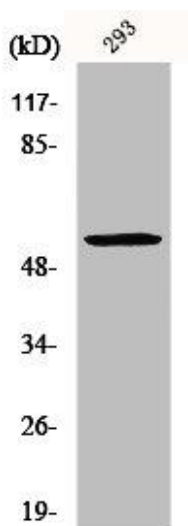
Liquid in PBS containing 50% glycerol, 0.5% BSA and 0.02% sodium azide.

## Product Images

---



Western Blot analysis of L929 cells using Mucin 13 Polyclonal Antibody.



Western Blot analysis of COLO205 cells using Mucin 13 Polyclonal Antibody.