

# MYF5 Antibody



PACO06663

---

## Product Information

**Size:**

50ug

**Reactivity:**

Human, Mouse

**Source:**

Rabbit

**Isotype:**

IgG

**Applications:**

ELISA, WB

**Recommended dilutions:**

ELISA:1:40000, WB:1:500-1:2000

**Protein Background:****Gene ID:**

MYF5

**Uniprot**

P13349

**Synonyms:**

MYF5; BHLHC2; Myogenic factor 5; Myf-5; Class C basic helix-loop-helix protein 2; bHLHc2

**Immunogen:**

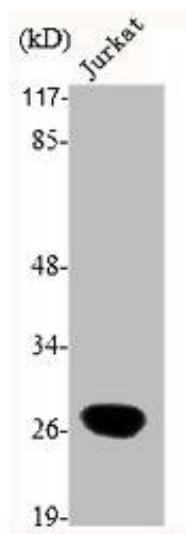
Synthesized peptide derived from the Internal region of human Myf-5.

**Storage:**

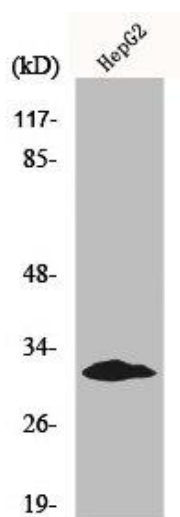
Liquid in PBS containing 50% glycerol, 0.5% BSA and 0.02% sodium azide.

## Product Images

---



Western Blot analysis of Jurkat cells using Myf-5 Polyclonal Antibody.



Western Blot analysis of HepG2 cells using Myf-5 Polyclonal Antibody.