

PACO06667

Product Information

Size:

50ug

Reactivity:

Human, Mouse, Rat

Source:

Rabbit

Isotype:

IgG

Applications:

ELISA, WB, IHC

Recommended dilutions:

ELISA:1:20000, WB:1:500-1:2000,
IHC:1:100-1:300

Protein Background:

Gene ID:

NRAS/HRAS/KRAS

Uniprot

P01111/P01112/P01116

Synonyms:

NRAS; HRAS1; GTPase NRas; Transforming protein N-Ras; HRAS; HRAS1; GTPase HRas; H-Ras-1; Ha-Ras; Transforming protein p21; c-H-ras; p21ras; KRAS; KRAS2; RASK2; GTPase KRas; K-Ras 2; Ki-Ras; c-K-ras; c-Ki-ras

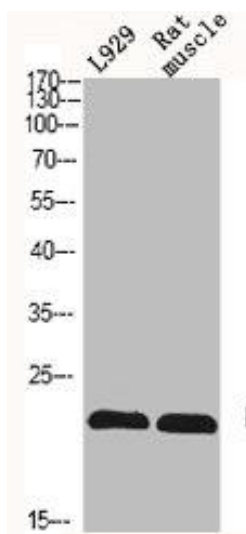
Immunogen:

Synthesized peptide derived from the N-terminal region of human N/H/K-Ras.

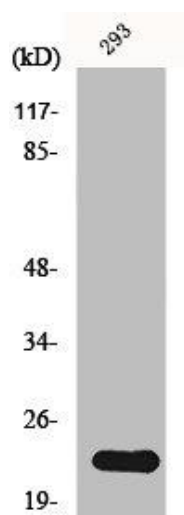
Storage:

Liquid in PBS containing 50% glycerol, 0.5% BSA and 0.02% sodium azide.

Product Images



Western Blot analysis of L929 RAT-MUSLCE cells using N/H/K-Ras Polyclonal Antibody.



Western Blot analysis of 293 cells using N/H/K-Ras Polyclonal Antibody.