

CDH2 Antibody



PACO06671

Product Information

Size:

50ug

Reactivity:

Human, Mouse, Rat

Source:

Rabbit

Isotype:

IgG

Applications:

ELISA, WB, IHC, IF

Recommended dilutions:

ELISA:1:10000, WB:1:500-1:2000,
IHC:1:100-1:300, IF:1:200-1:1000

Protein Background:**Gene ID:**

CDH2

Uniprot

P19022

Synonyms:

CDH2; CDHN; NCAD; Cadherin-2; CDw325; Neural cadherin; N-cadherin; CD antigen CD325

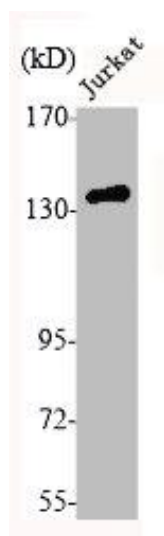
Immunogen:

Synthesized peptide derived from the C-terminal region of human N-cadherin.

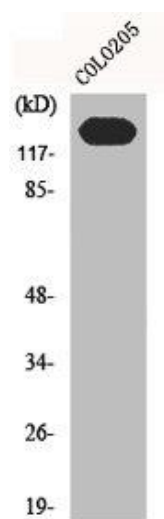
Storage:

Liquid in PBS containing 50% glycerol, 0.5% BSA and 0.02% sodium azide.

Product Images



Western Blot analysis of Jurkat cells using N-cadherin Polyclonal Antibody.



Western Blot analysis of K562 cells using N-cadherin Polyclonal Antibody.