

# NF1 Antibody



PACO06677

---

## Product Information

**Size:**

50ug

**Reactivity:**

Human, Mouse, Rat

**Source:**

Rabbit

**Isotype:**

IgG

**Applications:**

ELISA, WB, IF

**Recommended dilutions:**

ELISA:1:20000, WB:1:500-1:2000, IF:1:200-1:1000

**Protein Background:**

**Gene ID:**

NF1

**Uniprot**

P21359

**Synonyms:**

NF1; Neurofibromin; Neurofibromatosis-related protein NF-1

**Immunogen:**

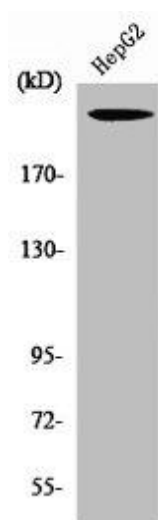
Synthesized peptide derived from the Internal region of human Neurofibromin.

**Storage:**

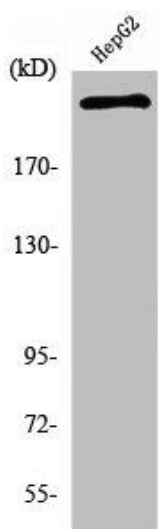
Liquid in PBS containing 50% glycerol, 0.5% BSA and 0.02% sodium azide.

## Product Images

---



Western Blot analysis of HepG2 cells using Neurofibromin Polyclonal Antibody.



Western Blot analysis of HepG2 cells using Neurofibromin Polyclonal Antibody.