

NFKB1 Antibody



PACO06681

Product Information

Size:

50ug

Reactivity:

Human

Source:

Rabbit

Isotype:

IgG

Applications:

ELISA, WB, IHC, IP

Recommended dilutions:

ELISA:1:10000, WB:1:500-1:2000,
IHC:1:100-1:300, IP:2-5ug

Protein Background:**Gene ID:**

NFKB1

Uniprot

P19838

Synonyms:

NFKB1; Nuclear factor NF- κ B p105 subunit; DNA-binding factor KBF1; EBP-1;
Nuclear factor of κ B; light polypeptide gene enhancer in B-cells 1

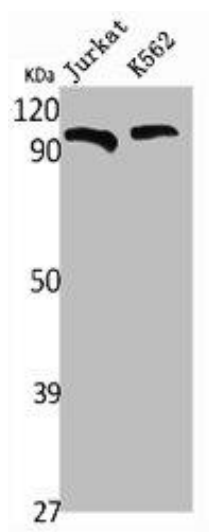
Immunogen:

Synthesized peptide derived from human NF κ B-p105 around the non-phosphorylation site of S907.

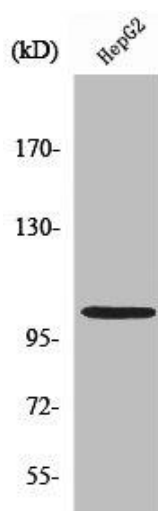
Storage:

Liquid in PBS containing 50% glycerol, 0.5% BSA and 0.02% sodium azide.

Product Images



Western Blot analysis of Jurkat K562 cells using NF kappa B-p105 Polyclonal Antibody.



Western Blot analysis of COLO205 cells using NF kappa B-p105 Polyclonal Antibody.