

PACO06692

Product Information

Size:

50ug

Reactivity:

Human, Mouse, Rat

Source:

Rabbit

Isotype:

IgG

Applications:

ELISA, WB, IHC

Recommended dilutions:

ELISA:1:20000, WB:1:500-1:2000,
IHC:1:100-1:300

Protein Background:

Gene ID:

NBN

Uniprot

O60934

Synonyms:

NBN; NBS; NBS1; P95; Nibrin; Cell cycle regulatory protein p95; Nijmegen breakage syndrome protein 1

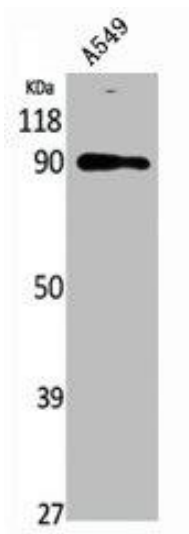
Immunogen:

Synthesized peptide derived from the Internal region of human Nibrin.

Storage:

Liquid in PBS containing 50% glycerol, 0.5% BSA and 0.02% sodium azide.

Product Images



Western Blot analysis of A549 cells using Nibrin Polyclonal Antibody.



Western Blot analysis of HT29 cells using Nibrin Polyclonal Antibody.