

NME1 Antibody



PACO06694

Product Information

Size:

50ug

Reactivity:

Human, Mouse, Rat

Source:

Rabbit

Isotype:

IgG

Applications:

ELISA, WB, IHC

Recommended dilutions:

ELISA:1:20000, WB:1:500-1:2000,
IHC:1:100-1:300

Protein Background:**Gene ID:**

NME1

Uniprot

P15531

Synonyms:

NME1; NDPKA; NM23; Nucleoside diphosphate kinase A; NDK A; NDP kinase A; Granzyme A-activated DNase; GAAD; Metastasis inhibition factor nm23; Tumor metastatic process-associated protein; nm23-H1

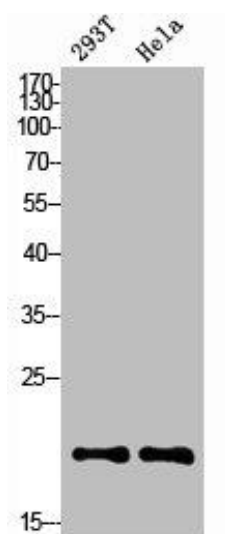
Immunogen:

Synthesized peptide derived from the Internal region of human NM23-H1.

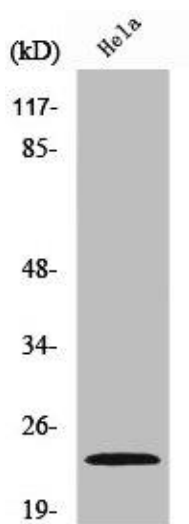
Storage:

Liquid in PBS containing 50% glycerol, 0.5% BSA and 0.02% sodium azide.

Product Images



Western Blot analysis of 293T HELA cells using NM23-H1 Polyclonal Antibody.



Western Blot analysis of HeLa cells using NM23-H1 Polyclonal Antibody.