

NPM1 Antibody



PACO06701

Product Information

Size:

50ug

Reactivity:

Human, Mouse, Rat, Monkey

Source:

Rabbit

Isotype:

IgG

Applications:

ELISA, WB, IHC

Recommended dilutions:

ELISA:1:10000, WB:1:500-1:2000,
IHC:1:100-1:300

Protein Background:**Gene ID:**

NPM1

Uniprot

P06748

Synonyms:

NPM1; NPM; Nucleophosmin; NPM; Nucleolar phosphoprotein B23; Nucleolar protein NO38; Numatrin

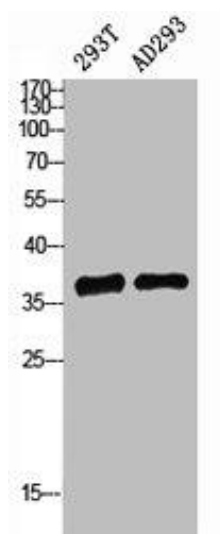
Immunogen:

Synthesized peptide derived from the N-terminal region of human Nucleophosmin.

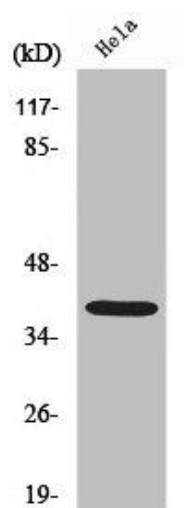
Storage:

Liquid in PBS containing 50% glycerol, 0.5% BSA and 0.02% sodium azide.

Product Images



Western Blot analysis of 293 AD293 cells using Nucleophosmin Polyclonal Antibody.



Western Blot analysis of COS7 cells using Nucleophosmin Polyclonal Antibody.