

STMN1 Antibody



PACO06712

Product Information

Size:

50ug

Reactivity:

Human, Mouse, Rat

Source:

Rabbit

Isotype:

IgG

Applications:

ELISA, WB, IHC, IF

Recommended dilutions:

ELISA:1:10000, WB:1:500-1:2000,
IHC:1:100-1:300, IF:1:200-1:1000

Protein Background:

Gene ID:

STMN1

Uniprot

P16949

Synonyms:

STMN1; C1orf215; LAP18; OP18; Stathmin; Leukemia-associated phosphoprotein p18; Metablastin; Oncoprotein 18; Op18; Phosphoprotein p19; pp19; ProsoLin; Protein Pr22; pp17

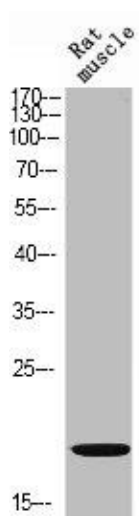
Immunogen:

Synthesized peptide derived from human Op18 around the non-phosphorylation site of S25.

Storage:

Liquid in PBS containing 50% glycerol, 0.5% BSA and 0.02% sodium azide.

Product Images



Western Blot analysis of RAT-MUSCLE cells using Op18 Polyclonal Antibody.



Western Blot analysis of Jurkat cells using Op18 Polyclonal Antibody.