

PACO06724

---

## Product Information

**Size:**

50ug

**Reactivity:**

Human, Mouse, Rat

**Source:**

Rabbit

**Isotype:**

IgG

**Applications:**

ELISA, WB, IHC

**Recommended dilutions:**

ELISA:1:5000, WB:1:500-1:2000, IHC:1:100-1:300

**Protein Background:**

**Gene ID:**

NCF1

**Uniprot**

P14598

**Synonyms:**

NCF1; NOXO2; SH3PXD1A; Neutrophil cytosol factor 1; NCF-1; 47 kDa autosomal chronic granulomatous disease protein; 47 kDa neutrophil oxidase factor; NCF-47K; Neutrophil NADPH oxidase factor 1; Nox organizer 2; Nox-organizing protein 2; SH3

**Immunogen:**

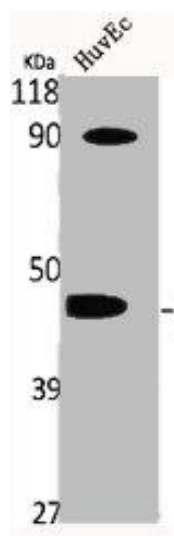
Synthesized peptide derived from human p47-phox around the non-phosphorylation site of S370.

**Storage:**

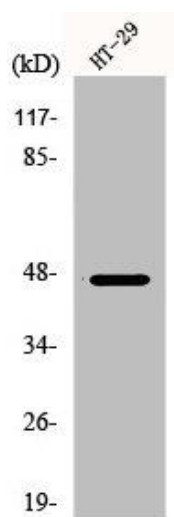
Liquid in PBS containing 50% glycerol, 0.5% BSA and 0.02% sodium azide.

## Product Images

---



Western Blot analysis of HuvEc cells using p47-phox Polyclonal Antibody.



Western Blot analysis of COLO205 cells using p47-phox Polyclonal Antibody.