

RPS6KB1 Antibody



PACO06731

Product Information

Size:

50ug

Reactivity:

Human, Mouse, Rat

Source:

Rabbit

Isotype:

IgG

Applications:

ELISA, WB, IHC, IF

Recommended dilutions:

ELISA:1:40000, WB:1:500-1:2000,
IHC:1:100-1:300, IF:1:200-1:1000

Protein Background:**Gene ID:**

RPS6KB1

Uniprot

P23443

Synonyms:

RPS6KB1; STK14A; Ribosomal protein S6 kinase beta-1; S6K-beta-1; S6K1; 70 kDa ribosomal protein S6 kinase 1; P70S6K1; p70-S6K 1; Ribosomal protein S6 kinase I; Serine/threonine-protein kinase 14A; p70 ribosomal S6 kinase alpha; p70 S6 kinas

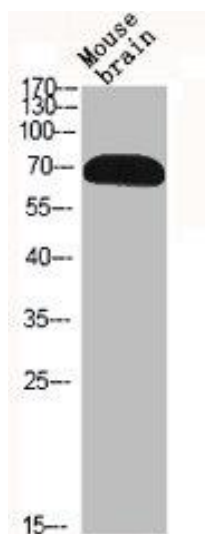
Immunogen:

Synthesized peptide derived from human p70 S6 kinase α around the non-phosphorylation site of T229.

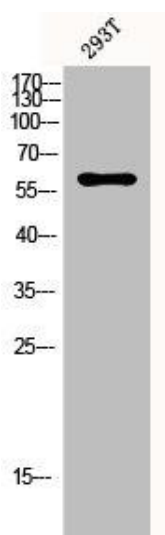
Storage:

Liquid in PBS containing 50% glycerol, 0.5% BSA and 0.02% sodium azide.

Product Images



Western Blot analysis of MOUSE-BRAIN cells using p70 S6 kinase alpha Polyclonal Antibody.



Western Blot analysis of 293T cells using p70 S6 kinase alpha Polyclonal Antibody.