

SERPINE1 Antibody



PACO06734

Product Information

Size:

50ug

Reactivity:

Human, Mouse, Rat

Source:

Rabbit

Isotype:

IgG

Applications:

ELISA, WB, IHC

Recommended dilutions:

ELISA:1:20000, WB:1:500-1:2000,
IHC:1:100-1:300

Protein Background:

Gene ID:

SERPINE1

Uniprot

P05121

Synonyms:

SERPINE1; PAI1; PLANH1; Plasminogen activator inhibitor 1; PAI; PAI-1; Endothelial plasminogen activator inhibitor; Serpin E1

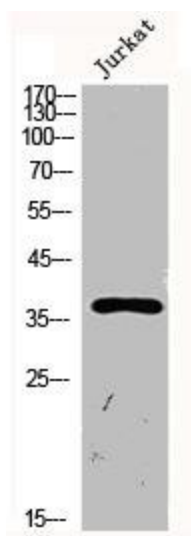
Immunogen:

Synthesized peptide derived from the Internal region of human PAI-1.

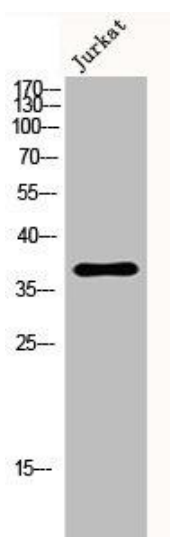
Storage:

Liquid in PBS containing 50% glycerol, 0.5% BSA and 0.02% sodium azide.

Product Images



Western Blot analysis of Jurkat cells using PAI-1 Polyclonal Antibody.



Western Blot analysis of Jurkat cells using PAI-1 Polyclonal Antibody.