

SERPINA5 Antibody



PACO06735

Product Information

Size:

50ug

Reactivity:

Human

Source:

Rabbit

Isotype:

IgG

Applications:

ELISA, WB, IHC

Recommended dilutions:

ELISA:1:20000, WB:1:500-1:2000,
IHC:1:100-1:300

Protein Background:

Gene ID:

SERPINA5

Uniprot

P05154

Synonyms:

SERPINA5; PCI; PLANH3; Plasma serine protease inhibitor; Acrosomal serine protease inhibitor; Plasminogen activator inhibitor 3; PAI-3; PAI3; Protein C inhibitor; PCI; Serpin A5

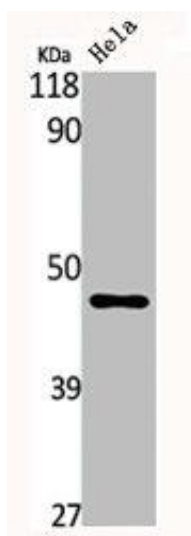
Immunogen:

Synthesized peptide derived from the Internal region of human PAI-3.

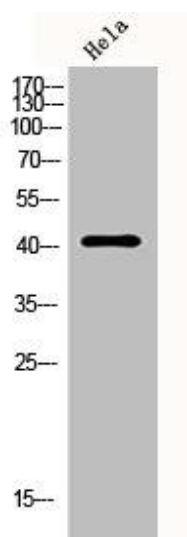
Storage:

Liquid in PBS containing 50% glycerol, 0.5% BSA and 0.02% sodium azide.

Product Images



Western Blot analysis of HELA cells using PAI-3 Polyclonal Antibody.



Western Blot analysis of HeLa cells using PAI-3 Polyclonal Antibody.