

PDGFRA Antibody



PACO06739

Product Information

Size:

50ug

Reactivity:

Human, Mouse, Rat

Source:

Rabbit

Isotype:

IgG

Applications:

ELISA, WB, IHC, IF

Recommended dilutions:

ELISA:1:20000, WB:1:500-1:2000,
IHC:1:100-1:300, IF:1:200-1:1000

Protein Background:**Gene ID:**

PDGFRA

Uniprot

P16234

Synonyms:

PDGFRA; PDGFR2; RHEPDGFRA; Platelet-derived growth factor receptor alpha; PDGF-R-alpha; PDGFR-alpha; alpha platelet-derived growth factor receptor; alpha-type platelet-derived growth factor receptor; CD140 antigen-like family member A; CD14

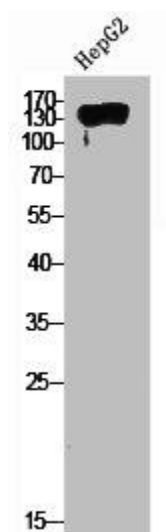
Immunogen:

Synthesized peptide derived from the C-terminal region of human PDGFR- α .

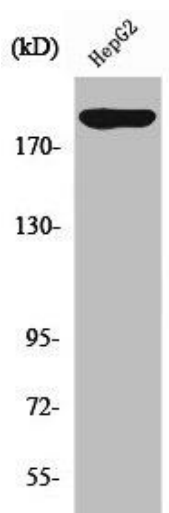
Storage:

Liquid in PBS containing 50% glycerol, 0.5% BSA and 0.02% sodium azide.

Product Images



Western Blot analysis of HepG2 cells using PDGFR- alpha Polyclonal Antibody.



Western Blot analysis of HepG2 cells using PDGFR-alpha Polyclonal Antibody.