

# PIK3CA Antibody



PACO06746

---

## Product Information

**Size:**

50ug

**Reactivity:**

Human, Mouse

**Source:**

Rabbit

**Isotype:**

IgG

**Applications:**

ELISA, WB, IHC

**Recommended dilutions:**

ELISA:1:40000, WB:1:500-1:2000,  
IHC:1:100-1:300

**Protein Background:**

**Gene ID:**

PIK3CA

**Uniprot**

P42336

**Synonyms:**

PIK3CA; Phosphatidylinositol 4, 5-bisphosphate 3-kinase catalytic subunit alpha isoform; PI3-kinase subunit alpha; PI3K-alpha; PI3Kalpha; PtdIns-3-kinase subunit alpha; Phosphatidylinositol 4,5-bisphosphate 3-kinase 110 kDa catalytic subunit

**Immunogen:**

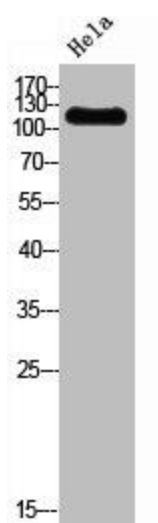
Synthesized peptide derived from the Internal region of human PI 3-kinase p110 &alpha; .

**Storage:**

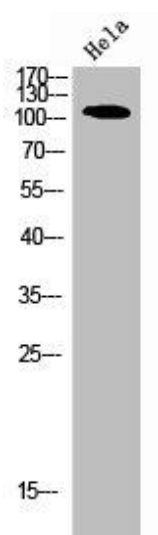
Liquid in PBS containing 50% glycerol, 0.5% BSA and 0.02% sodium azide.

## Product Images

---



Western Blot analysis of HELA cells using PI 3-kinase p110 alpha Polyclonal Antibody.



Western Blot analysis of HELA cells using PI 3-kinase p110alpha Polyclonal Antibody.