

PIK3R1/PIK3R3 Antibody



PACO06748

Product Information

Size:

50ug

Reactivity:

Human, Mouse, Rat, Monkey

Source:

Rabbit

Isotype:

IgG

Applications:

ELISA, WB, IHC, IF

Recommended dilutions:

ELISA:1:20000, WB:1:500-1:2000,
IHC:1:100-1:300, IF:1:200-1:1000

Protein Background:**Gene ID:**

PIK3R1/PIK3R3

Uniprot

P27986/Q92569

Synonyms:

PIK3R1; GRB1; Phosphatidylinositol 3-kinase regulatory subunit alpha; PI3-kinase regulatory subunit alpha; PI3K regulatory subunit alpha; PtdIns-3-kinase regulatory subunit alpha; Phosphatidylinositol 3-kinase 85 kDa regulatory subunit alph

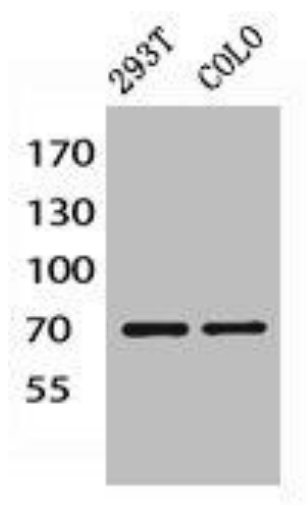
Immunogen:

Synthesized peptide derived from human PI 3-kinase p85/p55 around the non-phosphorylation site of Y458/199.

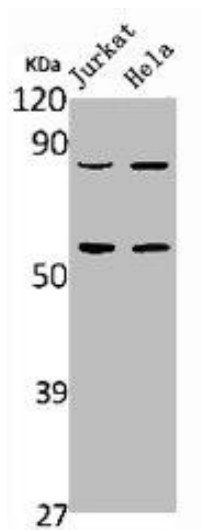
Storage:

Liquid in PBS containing 50% glycerol, 0.5% BSA and 0.02% sodium azide.

Product Images



Western blot analysis of 293T COLO lysis using PI 3-kinase p85 alpha / gamma antibody.



Western Blot analysis of Jurkat HELA cells using PI 3-kinase p85alpha / gamma Polyclonal Antibody.