

PACO06753

Product Information

Size:

50ug

Reactivity:

Human, Mouse, Rat

Source:

Rabbit

Isotype:

IgG

Applications:

ELISA, WB

Recommended dilutions:

ELISA:1:40000, WB:1:500-1:2000

Protein Background:**Gene ID:**

PITPNB

Uniprot

P48739

Synonyms:

PITPNB; Phosphatidylinositol transfer protein beta isoform; PI-TP-beta; PtdIns transfer protein beta; PtdInsTP beta

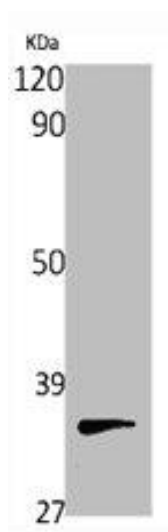
Immunogen:

Synthesized peptide derived from the Internal region of human PITP β .

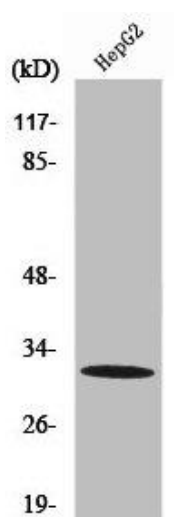
Storage:

Liquid in PBS containing 50% glycerol, 0.5% BSA and 0.02% sodium azide.

Product Images



Western Blot analysis of various cells using P1TP beta Polyclonal Antibody.



Western Blot analysis of HepG2 cells using P1TP beta Polyclonal Antibody.