

# PRKACA/PRKACB Antibody



PACO06759

---

## Product Information

**Size:**

50ug

**Reactivity:**

Human, Mouse, Rat

**Source:**

Rabbit

**Isotype:**

IgG

**Applications:**

ELISA, WB, IHC, IF

**Recommended dilutions:**

ELISA:1:20000, WB:1:500-1:2000,  
IHC:1:100-1:300, IF:1:200-1:1000

**Protein Background:****Gene ID:**

PRKACA/PRKACB

**Uniprot**

P17612/P22694

**Synonyms:**

PRKACA; PKACA; cAMP-dependent protein kinase catalytic subunit alpha; PKA C-alpha; PRKACB; cAMP-dependent protein kinase catalytic subunit beta; PKA C-beta

**Immunogen:**

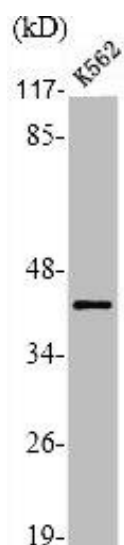
Synthesized peptide derived from the N-terminal region of human PKA  $\alpha$  /  $\beta$ ; cat.

**Storage:**

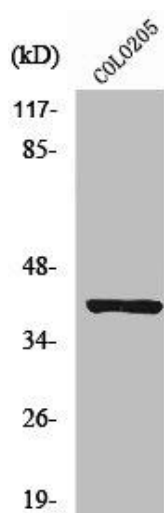
Liquid in PBS containing 50% glycerol, 0.5% BSA and 0.02% sodium azide.

## Product Images

---



Western Blot analysis of K562 cells using PKA alpha / beta cat Polyclonal Antibody.



Western Blot analysis of Jurkat cells using PKAalpha / beta cat Polyclonal Antibody.