

**PRKCA/PRKCB/PRKCD/PRKCE/PRKCG/PRKCH/PRK  
KCQ/PRKCZ Antibody**  
PACO06761



---

**Product Information**

**Size:**

50ug

**Reactivity:**

Human, Mouse, Rat

**Source:**

Rabbit

**Isotype:**

IgG

**Applications:**

ELISA, WB, IHC, IF

**Recommended dilutions:**

ELISA:1:5000, WB:1:500-1:2000, IHC:1:100-1:300, IF:1:200-1:1000

**Protein Background:**

**Gene ID:**

PRKCA/PRKCB/PRKCD/PRKCE/PRKCG/PRKCH/PRKCQ/PRKCZ

**Uniprot**

P17252/P05771/Q05655/Q02156/P05129/P24723/Q04759/Q05513

**Synonyms:**

PRKCA; PKCA; PRKACA; Protein kinase C alpha type; PKC-A; PKC-alpha; PRKCB; PKCB; PRKCB1; Protein kinase C beta type; PKC-B; PKC-beta; PRKCD; Protein kinase C delta type; Tyrosine-protein kinase PRKCD; nPKC-delta; PRKCE; PKCE; Protein kinase

**Immunogen:**

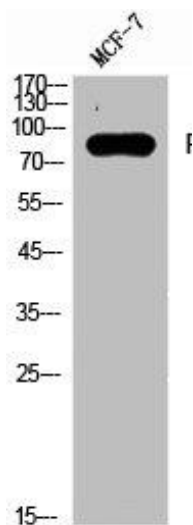
Synthesized peptide derived from human PKC around the non-phosphorylation site of T497.

**Storage:**

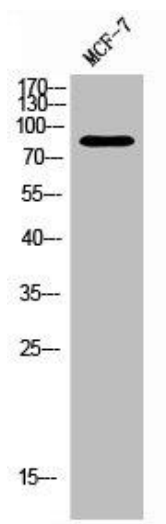
Liquid in PBS containing 50% glycerol, 0.5% BSA and 0.02% sodium azide.

## Product Images

---



Western Blot analysis of MCF-7 cells using PKC Polyclonal Antibody.



Western Blot analysis of MCF-7 cells using PKC Polyclonal Antibody.