

PRKCZ Antibody



PACO06763

Product Information

Size:

50ug

Reactivity:

Human, Mouse, Rat, Monkey

Source:

Rabbit

Isotype:

IgG

Applications:

ELISA, WB, IHC, IF

Recommended dilutions:

ELISA:1:5000, WB:1:500-1:2000, IHC:1:100-1:300, IF:1:200-1:1000

Protein Background:**Gene ID:**

PRKCZ

Uniprot

Q05513

Synonyms:

PRKCZ; PKC2; Protein kinase C zeta type; nPKC-zeta

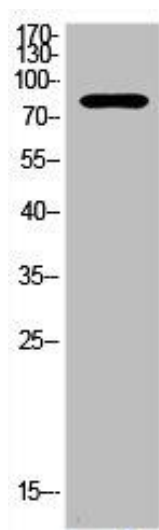
Immunogen:

Synthesized peptide derived from human PKC zeta around the non-phosphorylation site of T560.

Storage:

Liquid in PBS containing 50% glycerol, 0.5% BSA and 0.02% sodium azide.

Product Images



Western Blot analysis of HeLa cells using PKC zeta Polyclonal Antibody.



Western Blot analysis of COS7 cells using PKC zeta Polyclonal Antibody.