

# PML Antibody



PACO06770

---

## Product Information

**Size:**

50ug

**Reactivity:**

Human

**Source:**

Rabbit

**Isotype:**

IgG

**Applications:**

ELISA, WB, IHC, IF

**Recommended dilutions:**

ELISA:1:10000, WB:1:500-1:2000,  
IHC:1:100-1:300, IF:1:200-1:1000

**Protein Background:****Gene ID:**

PML

**Uniprot**

P29590

**Synonyms:**

PML; MYL; RNF71; TRIM19; Protein PML; Promyelocytic leukemia protein; RING finger protein 71; Tripartite motif-containing protein 19

**Immunogen:**

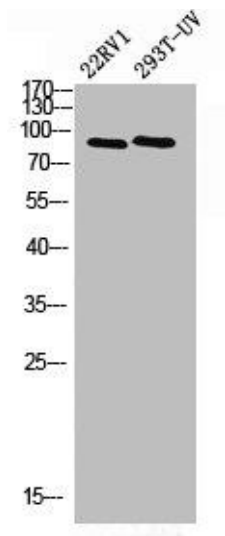
Synthesized peptide derived from the N-terminal region of human PML.

**Storage:**

Liquid in PBS containing 50% glycerol, 0.5% BSA and 0.02% sodium azide.

## Product Images

---



Western Blot analysis of 293T-UV 22RV1 cells using PML Polyclonal Antibody.



Western Blot analysis of A549 cells using PML Polyclonal Antibody.