

RAB34 Antibody



PACO06785

Product Information

Size:

50ug

Reactivity:

Human

Source:

Rabbit

Isotype:

IgG

Applications:

ELISA, WB, IHC

Recommended dilutions:

ELISA:1:5000, WB:1:500-1:2000, IHC:1:100-1:300

Protein Background:

Gene ID:

RAB34

Uniprot

Q9BZG1

Synonyms:

RAB34; RAB39; RAH; Ras-related protein Rab-34; Ras-related protein Rab-39; Ras-related protein Rah

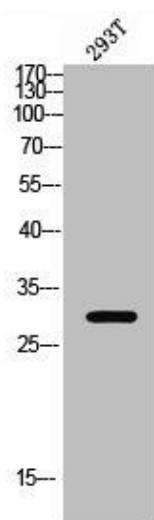
Immunogen:

Synthesized peptide derived from the C-terminal region of human Rab 34.

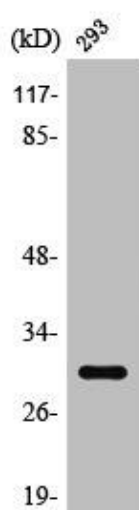
Storage:

Liquid in PBS containing 50% glycerol, 0.5% BSA and 0.02% sodium azide.

Product Images



Western blot analysis of 293T lysis using Rab 34 antibody.



Western Blot analysis of 293 cells using Rab 34 Polyclonal Antibody.