

# RABL2A Antibody



PACO06786

---

## Product Information

**Size:**

50ug

**Reactivity:**

Human

**Source:**

Rabbit

**Isotype:**

IgG

**Applications:**

ELISA, WB

**Recommended dilutions:**

ELISA:1:20000, WB:1:500-1:2000

**Protein Background:**

**Gene ID:**

RABL2A

**Uniprot**

Q9UBK7

**Synonyms:**

RABL2A; Rab-like protein 2A

**Immunogen:**

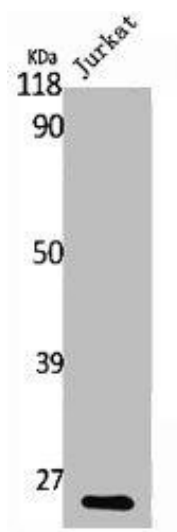
Synthesized peptide derived from the C-terminal region of human Rab L2A.

**Storage:**

Liquid in PBS containing 50% glycerol, 0.5% BSA and 0.02% sodium azide.

## Product Images

---



Western Blot analysis of Jurkat cells using Rab L2A Polyclonal Antibody.



Western Blot analysis of COLO205 cells using Rab L2A Polyclonal Antibody.