

RAC1/RAC2/RAC3/CDC42 Antibody



PACO06787

Product Information

Size:

50ug

Reactivity:

Human, Mouse, Rat

Source:

Rabbit

Isotype:

IgG

Applications:

ELISA, WB, IHC

Recommended dilutions:

ELISA:1:20000, WB:1:500-1:2000,
IHC:1:100-1:300

Protein Background:**Gene ID:**

RAC1/RAC2/RAC3/CDC42

Uniprot

P63000/P15153/P60763/P60953

Synonyms:

RAC1; TC25; MIG5; Ras-related C3 botulinum toxin substrate 1; Cell migration-inducing gene 5 protein; Ras-like protein TC25; p21-Rac1; RAC2; Ras-related C3 botulinum toxin substrate 2; GX; Small G protein; p21-Rac2; RAC3; Ras-related C3 bot

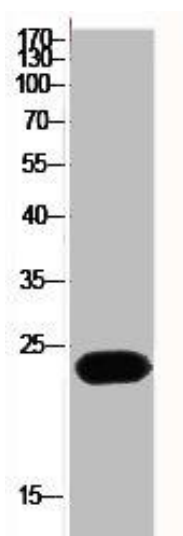
Immunogen:

Synthesized peptide derived from human Rac1/2/3/CDC42 around the non-phosphorylation site of S71.

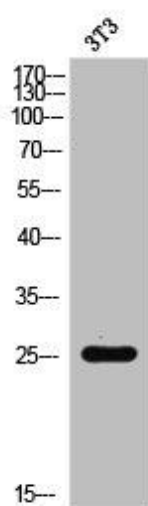
Storage:

Liquid in PBS containing 50% glycerol, 0.5% BSA and 0.02% sodium azide.

Product Images



Western Blot analysis of HeLa cells using Rac1/2/3/CDC42 Polyclonal Antibody.



Western Blot analysis of 3T3 cells using Rac1/2/3/CDC42 Polyclonal Antibody.