

RAD52 Antibody



PACO06791

Product Information

Size:

50ug

Reactivity:

Human, Mouse

Source:

Rabbit

Isotype:

IgG

Applications:

ELISA, WB, IHC, IF

Recommended dilutions:

ELISA:1:10000, WB:1:500-1:2000,
IHC:1:100-1:300, IF:1:200-1:1000

Protein Background:

Gene ID:

RAD52

Uniprot

P43351

Synonyms:

RAD52; DNA repair protein RAD52 homolog

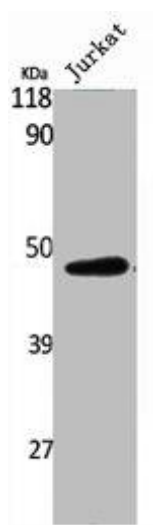
Immunogen:

Synthesized peptide derived from human Rad52 around the non-phosphorylation site of Y104.

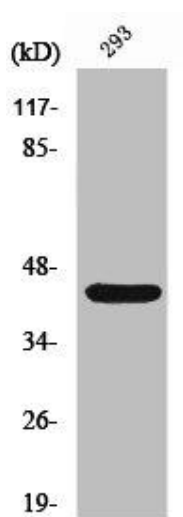
Storage:

Liquid in PBS containing 50% glycerol, 0.5% BSA and 0.02% sodium azide.

Product Images



Western Blot analysis of Jurkat cells using Rad52 Polyclonal Antibody.



Western Blot analysis of 293 cells using Rad52 Polyclonal Antibody.