

RRAGA/RRAGB Antibody



PACO06793

Product Information

Size:

50ug

Reactivity:

Human, Mouse, Rat

Source:

Rabbit

Isotype:

IgG

Applications:

ELISA, WB, IHC

Recommended dilutions:

ELISA:1:20000, WB:1:500-1:2000,
IHC:1:100-1:300

Protein Background:**Gene ID:**

RRAGA/RRAGB

Uniprot

Q7L523/Q5VZM2

Synonyms:

RRAGA; Ras-related GTP-binding protein A; Rag A; RagA; Adenovirus E3 14.7 kDa-interacting protein 1; FIP-1; RRAGB; Ras-related GTP-binding protein B; Rag B; RagB

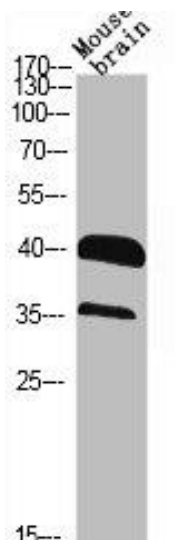
Immunogen:

Synthesized peptide derived from the C-terminal region of human Rag A/B.

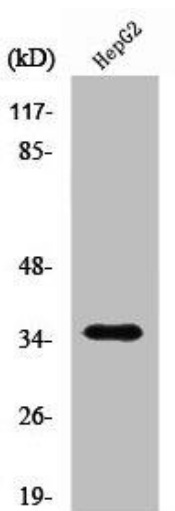
Storage:

Liquid in PBS containing 50% glycerol, 0.5% BSA and 0.02% sodium azide.

Product Images



Western Blot analysis of Jurkat NIH-3T3 cells using Rag A/B Polyclonal Antibody.



Western Blot analysis of HepG2 cells using Rag A/B Polyclonal Antibody.