

RPS6 Antibody



PACO06800

Product Information

Size:

50ug

Reactivity:

Human, Mouse, Rat

Source:

Rabbit

Isotype:

IgG

Applications:

ELISA, WB, IF

Recommended dilutions:

ELISA:1:20000, WB:1:500-1:2000, IF:1:200-1:1000

Protein Background:**Gene ID:**

RPS6

Uniprot

P62753

Synonyms:

RPS6; OK/SW-cl.2; 40S ribosomal protein S6; Phosphoprotein NP33

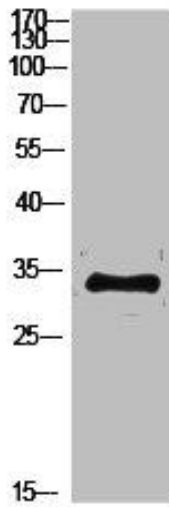
Immunogen:

Synthesized peptide derived from human Ribosomal Protein S6 around the non-phosphorylation site of S235.

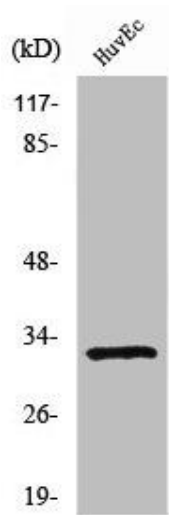
Storage:

Liquid in PBS containing 50% glycerol, 0.5% BSA and 0.02% sodium azide.

Product Images



Western Blot analysis of customer's(cat sample) using Ribosomal Protein S6 Polyclonal Antibody.



Western Blot analysis of HuvEc cells using Ribosomal Protein S6 Polyclonal Antibody.