

RIMS4 Antibody



PACO06801

Product Information

Size:

50ug

Reactivity:

Human, Mouse, Rat

Source:

Rabbit

Isotype:

IgG

Applications:

ELISA, WB, IHC

Recommended dilutions:

ELISA:1:20000, WB:1:500-1:2000,
IHC:1:100-1:300

Protein Background:

Gene ID:

RIMS4

Uniprot

Q9H426

Synonyms:

RIMS4; C20orf190; Regulating synaptic membrane exocytosis protein 4; RIM4 gamma;
Rab3-interacting molecule 4; RIM 4

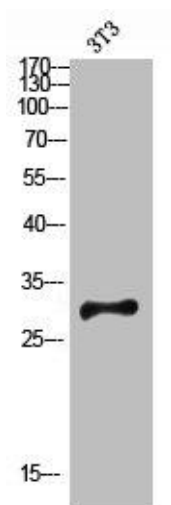
Immunogen:

Synthesized peptide derived from the Internal region of human Rim4.

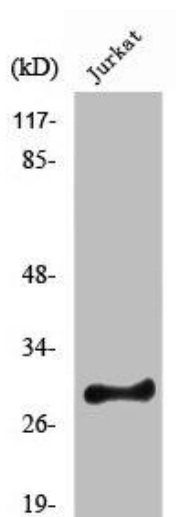
Storage:

Liquid in PBS containing 50% glycerol, 0.5% BSA and 0.02% sodium azide.

Product Images



Western blot analysis of 3T3 lysis using Rim4 antibody.



Western Blot analysis of HeLa cells using Rim4 Polyclonal Antibody.