

# RRS1 Antibody



PACO06804

---

## Product Information

**Size:**

50ug

**Reactivity:**

Human, Mouse, Rat

**Source:**

Rabbit

**Isotype:**

IgG

**Applications:**

ELISA, WB, IHC

**Recommended dilutions:**

ELISA:1:10000, WB:1:500-1:2000,  
IHC:1:100-1:300

**Protein Background:**

**Gene ID:**

RRS1

**Uniprot**

Q15050

**Synonyms:**

RRS1; KIAA0112; RRR; Ribosome biogenesis regulatory protein homolog

**Immunogen:**

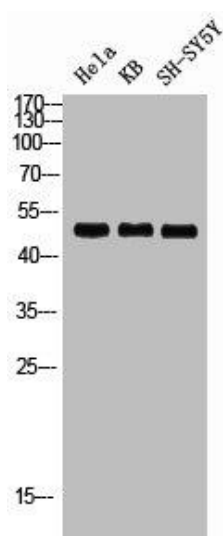
Synthesized peptide derived from the Internal region of human RRS1.

**Storage:**

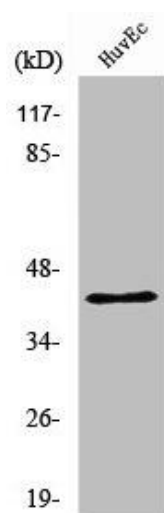
Liquid in PBS containing 50% glycerol, 0.5% BSA and 0.02% sodium azide.

## Product Images

---



Western blot analysis of HELA KB SH-SY5Y lysis using RRS1 antibody.



Western Blot analysis of HuvEc cells using RRS1 Polyclonal Antibody.