

PTPN11 Antibody



PACO06812

Product Information

Size:

50ug

Reactivity:

Human, Mouse, Rat, Monkey

Source:

Rabbit

Isotype:

IgG

Applications:

ELISA, WB, IHC

Recommended dilutions:

ELISA:1:40000, WB:1:500-1:2000,
IHC:1:100-1:300

Protein Background:

Gene ID:

PTPN11

Uniprot

Q06124

Synonyms:

PTPN11; PTP2C; SHPTP2; Tyrosine-protein phosphatase non-receptor type 11; Protein-tyrosine phosphatase 1D; PTP-1D; Protein-tyrosine phosphatase 2C; PTP-2C; SH-PTP2; SHP-2; Shp2; SH-PTP3

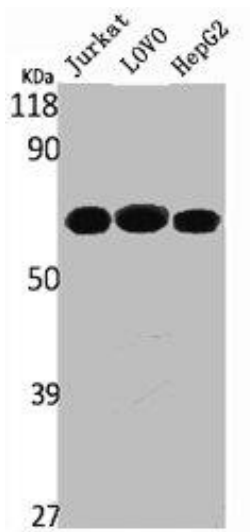
Immunogen:

Synthesized peptide derived from the Internal region of human SH-PTP2.

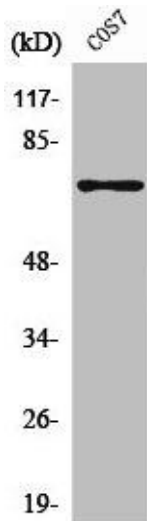
Storage:

Liquid in PBS containing 50% glycerol, 0.5% BSA and 0.02% sodium azide.

Product Images



Western Blot analysis of Jurkat LOVO HepG2 cells using SH-PTP2 Polyclonal Antibody.



Western Blot analysis of COS7 cells using SH-PTP2 Polyclonal Antibody.