

SIAH1/SIAH2 Antibody



PACO06813

Product Information

Size:

50ug

Reactivity:

Human, Mouse, Rat

Source:

Rabbit

Isotype:

IgG

Applications:

ELISA, WB, IHC, IF

Recommended dilutions:

ELISA:1:10000, WB:1:500-1:2000,
IHC:1:100-1:300, IF:1:200-1:1000

Protein Background:**Gene ID:**

SIAH1/SIAH2

Uniprot

Q8IUQ4/O43255

Synonyms:

SIAH1; HUMSIAH; E3 ubiquitin-protein ligase SIAH1; Seven in absentia homolog 1; Siah-1; Siah-1a; SIAH2; E3 ubiquitin-protein ligase SIAH2; Seven in absentia homolog 2; Siah-2; hSiah2

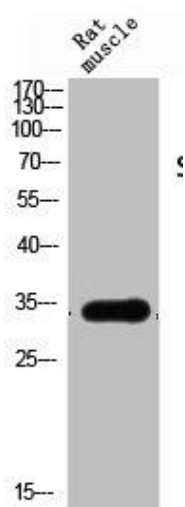
Immunogen:

Synthesized peptide derived from the Internal region of human Siah-1/2.

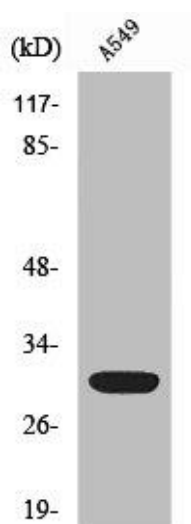
Storage:

Liquid in PBS containing 50% glycerol, 0.5% BSA and 0.02% sodium azide.

Product Images



Western Blot analysis of RAT-MUSCLE cells using Siah-1/2 Polyclonal Antibody.



Western Blot analysis of HeLa cells using Siah-1/2 Polyclonal Antibody.