

SPIN1 Antibody



PACO06820

Product Information

Size:

50ug

Reactivity:

Human, Mouse, Rat

Source:

Rabbit

Isotype:

IgG

Applications:

ELISA, WB, IHC, IF

Recommended dilutions:

ELISA:1:20000, WB:1:500-1:2000,
IHC:1:100-1:300, IF:1:200-1:1000

Protein Background:

Gene ID:

SPIN1

Uniprot

Q9Y657

Synonyms:

SPIN1; OCR; SPIN; Spindlin-1; Ovarian cancer-related protein

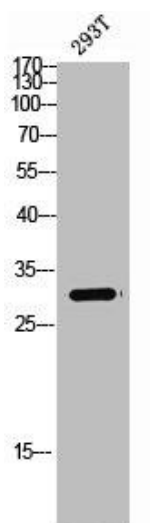
Immunogen:

Synthesized peptide derived from the Internal region of human Spindlin-1.

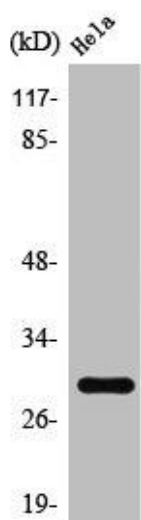
Storage:

Liquid in PBS containing 50% glycerol, 0.5% BSA and 0.02% sodium azide.

Product Images



Western Blot analysis of 293T cells using Spindlin-1 Polyclonal Antibody.



Western Blot analysis of HeLa cells using Spindlin-1 Polyclonal Antibody.