

STAT3 Antibody



PACO06825

Product Information

Size:

50ug

Reactivity:

Human, Mouse, Rat

Source:

Rabbit

Isotype:

IgG

Applications:

ELISA, WB, IHC, IF

Recommended dilutions:

ELISA:1:10000, WB:1:500-1:2000,
IHC:1:100-1:300, IF:1:200-1:1000

Protein Background:**Gene ID:**

STAT3

Uniprot

P40763

Synonyms:

STAT3; APRF; Signal transducer and activator of transcription 3; Acute-phase response factor

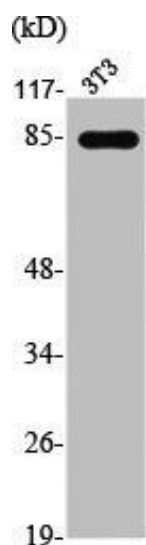
Immunogen:

Synthesized peptide derived from human Stat3 around the non-phosphorylation site of S727.

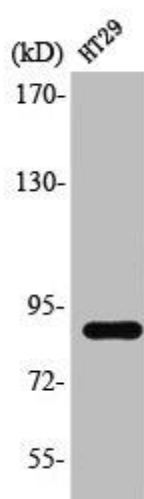
Storage:

Liquid in PBS containing 50% glycerol, 0.5% BSA and 0.02% sodium azide.

Product Images



Western Blot analysis of NIH-3T3 cells using Stat3 Polyclonal Antibody.



Western Blot analysis of HT29 cells using Stat3 Polyclonal Antibody.