

PACO06846

Product Information

Size:

50ug

Reactivity:

Human, Monkey

Source:

Rabbit

Isotype:

IgG

Applications:

ELISA, WB

Recommended dilutions:

ELISA:1:10000, WB:1:500-1:2000

Protein Background:**Gene ID:**

TYR

Uniprot

P14679

Synonyms:

TYR; Tyrosinase; LB24-AB; Monophenol monooxygenase; SK29-AB; Tumor rejection antigen AB

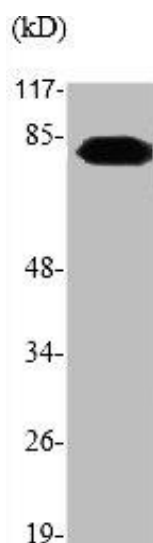
Immunogen:

Synthesized peptide derived from the C-terminal region of human TYR.

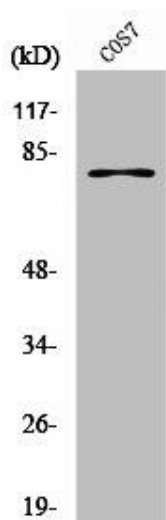
Storage:

Liquid in PBS containing 50% glycerol, 0.5% BSA and 0.02% sodium azide.

Product Images



Western Blot analysis of various cells using TYR Polyclonal Antibody.



Western Blot analysis of COS7 cells using TYR Polyclonal Antibody.