

# ZNF106 Antibody



PACO06860

---

## Product Information

**Size:**

50ug

**Reactivity:**

Human, Mouse, Monkey

**Source:**

Rabbit

**Isotype:**

IgG

**Applications:**

ELISA, WB

**Recommended dilutions:**

ELISA:1:10000, WB:1:500-1:2000

**Protein Background:**

**Gene ID:**

ZNF106

**Uniprot**

Q9H2Y7

**Synonyms:**

ZFP106; SH3BP3; ZNF474; Zinc finger protein 106 homolog; Zfp-106; Zinc finger protein 474

**Immunogen:**

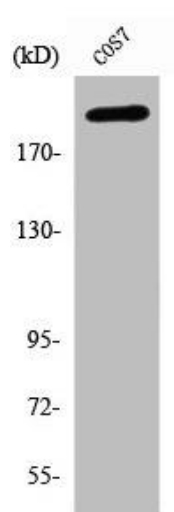
Synthesized peptide derived from the C-terminal region of human ZFP106.

**Storage:**

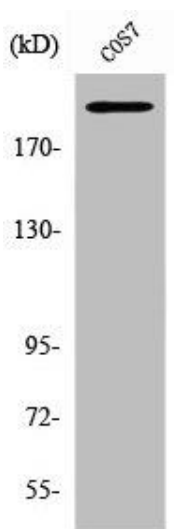
Liquid in PBS containing 50% glycerol, 0.5% BSA and 0.02% sodium azide.

## Product Images

---



Western Blot analysis of COS-7 cells using ZFP106 Polyclonal Antibody.



Western Blot analysis of COS7 cells using ZFP106 Polyclonal Antibody.