

PACO06872

Product Information

Size:

50ug

Reactivity:

Human, Mouse, Rat

Source:

Rabbit

Isotype:

IgG

Applications:

ELISA, WB

Recommended dilutions:

ELISA:1:20000, WB:1:500-1:2000

Protein Background:**Gene ID:**

PROCR

Uniprot

Q9UNN8

Synonyms:

PROCR; EPCR; Endothelial protein C receptor; Activated protein C receptor; APC receptor; Endothelial cell protein C receptor; CD201

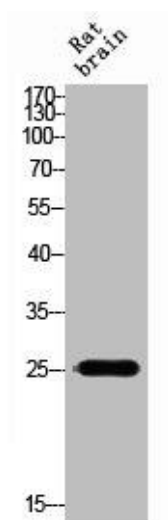
Immunogen:

Synthesized peptide derived from the Internal region of human CD201.

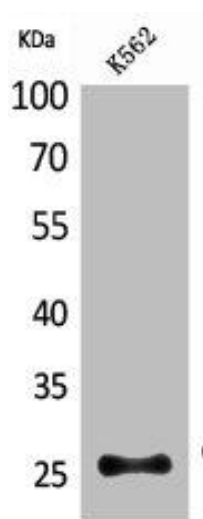
Storage:

Liquid in PBS containing 50% glycerol, 0.5% BSA and 0.02% sodium azide.

Product Images



Western blot analysis of Rat-brain lysis using CD201 antibody.



Western Blot analysis of K562 cells using CD201 Polyclonal Antibody.