

CD47 Antibody



PACO06881

Product Information

Size:

50ug

Reactivity:

Human

Source:

Rabbit

Isotype:

IgG

Applications:

ELISA, WB

Recommended dilutions:

ELISA:1:20000, WB:1:500-1:2000

Protein Background:

Gene ID:

CD47

Uniprot

Q08722

Synonyms:

CD47; MER6; Leukocyte surface antigen CD47; Antigenic surface determinant protein OA3; Integrin-associated protein; IAP; Protein MER6; CD47

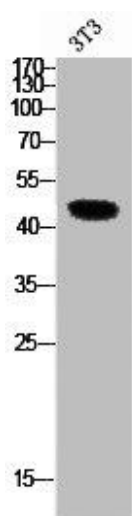
Immunogen:

Synthesized peptide derived from the Internal region of human CD47.

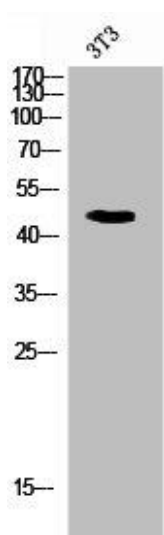
Storage:

Liquid in PBS containing 50% glycerol, 0.5% BSA and 0.02% sodium azide.

Product Images



Western Blot analysis of NIH-3T3 cells using CD47 Polyclonal Antibody.



Western Blot analysis of 3T3 cells using CD47 Polyclonal Antibody.