

CD33 Antibody



PACO06886

Product Information

Size:

50ug

Reactivity:

Human

Source:

Rabbit

Isotype:

IgG

Applications:

ELISA, WB

Recommended dilutions:

ELISA:1:10000, WB:1:500-1:2000

Protein Background:

Gene ID:

CD33

Uniprot

P20138

Synonyms:

CD33; SIGLEC3; Myeloid cell surface antigen CD33; Sialic acid, binding Ig-like lectin 3; Siglec-3; gp67; CD33

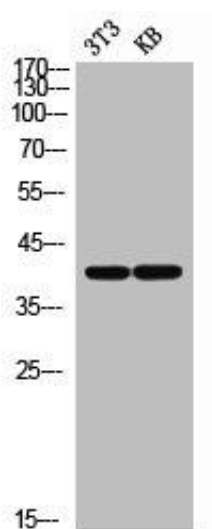
Immunogen:

Synthesized peptide derived from the Internal region of human CD33.

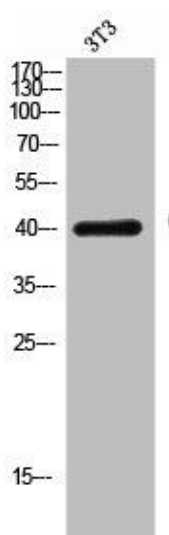
Storage:

Liquid in PBS containing 50% glycerol, 0.5% BSA and 0.02% sodium azide.

Product Images



Western Blot analysis of NIH-3T3 KB cells using CD33 Polyclonal Antibody.



Western Blot analysis of 3T3 cells using CD33 Polyclonal Antibody.