

# CEACAM3/CEACAM6 Antibody



PACO06892

---

## Product Information

**Size:**

50ug

**Reactivity:**

Human

**Source:**

Rabbit

**Isotype:**

IgG

**Applications:**

ELISA, WB

**Recommended dilutions:**

ELISA:1:10000, WB:1:500-1:2000

**Protein Background:****Gene ID:**

CEACAM3/CEACAM6

**Uniprot**

P40198/P40199

**Synonyms:**

CEACAM3; CD66D; CGM1; Carcinoembryonic antigen-related cell adhesion molecule 3; Carcinoembryonic antigen CGM1; CD66d; CEACAM6; NCA; Carcinoembryonic antigen-related cell adhesion molecule 6; Non-specific crossreacting antigen; Normal cross-reacting antigen

**Immunogen:**

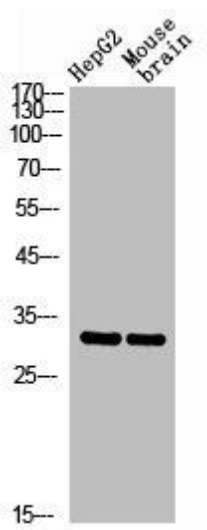
Synthesized peptide derived from the Internal region of human CD66c/d.

**Storage:**

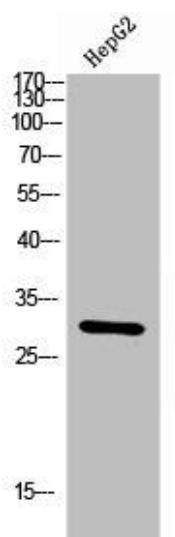
Liquid in PBS containing 50% glycerol, 0.5% BSA and 0.02% sodium azide.

## Product Images

---



Western Blot analysis of HepG2 mouse brain cells using CD66c/d Polyclonal Antibody.



Western Blot analysis of HEPG2 cells using CD66c/d Polyclonal Antibody.