

CD93 Antibody



PACO06893

Product Information

Size:

50ug

Reactivity:

Human

Source:

Rabbit

Isotype:

IgG

Applications:

ELISA, WB

Recommended dilutions:

ELISA:1:10000, WB:1:500-1:2000

Protein Background:**Gene ID:**

CD93

Uniprot

Q9NPY3

Synonyms:

CD93; C1QR1; MXRA4; Complement component C1q receptor; C1q/MBL/SPA receptor; C1qR; C1qR(p); C1qRp; CDw93; Complement component 1 q subcomponent receptor 1; Matrix-remodeling-associated protein 4; CD93

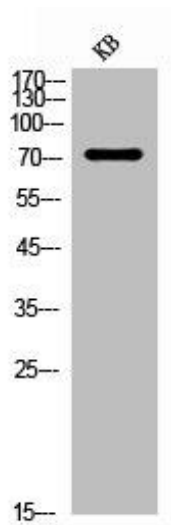
Immunogen:

Synthesized peptide derived from the Internal region of human CD93.

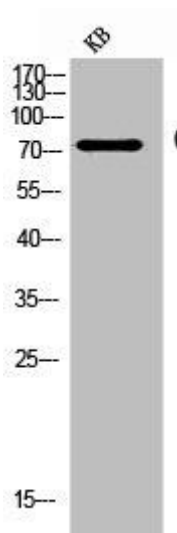
Storage:

Liquid in PBS containing 50% glycerol, 0.5% BSA and 0.02% sodium azide.

Product Images



Western Blot analysis of KB cells using CD93 Polyclonal Antibody.



Western Blot analysis of KB cells using CD93 Polyclonal Antibody.