

# CD300C Antibody



PACO06905

---

## Product Information

**Size:**

50ug

**Reactivity:**

Human

**Source:**

Rabbit

**Isotype:**

IgG

**Applications:**

ELISA, WB

**Recommended dilutions:**

ELISA:1:10000, WB:1:500-1:2000

**Protein Background:**

**Gene ID:**

CD300C

**Uniprot**

Q08708

**Synonyms:**

CD300C; CMRF35; CMRF35A; CMRF35A1; IGSF16; CMRF35-like molecule 6; CLM-6; CD300 antigen-like family member C; CMRF35-A1; CMRF-35; Immunoglobulin superfamily member 16; IgSF16; CD300c

**Immunogen:**

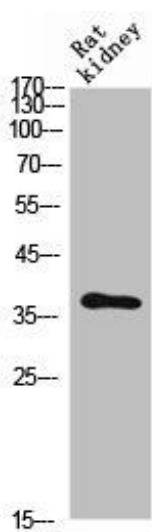
Synthesized peptide derived from the Internal region of human CD300c.

**Storage:**

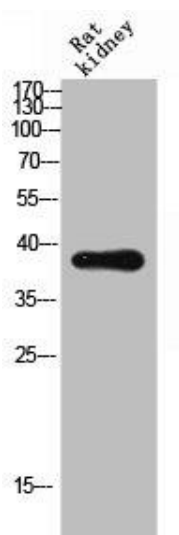
Liquid in PBS containing 50% glycerol, 0.5% BSA and 0.02% sodium azide.

## Product Images

---



Western Blot analysis of rat kidney cells using CD300c Polyclonal Antibody.



Western Blot analysis of RAT-kidney cells using CD300c Polyclonal Antibody.