

SIRPA/SIRPB1 Antibody



PACO06908

Product Information

Size:

50ug

Reactivity:

Human

Source:

Rabbit

Isotype:

IgG

Applications:

ELISA, WB

Recommended dilutions:

ELISA:1:10000, WB:1:500-1:2000

Protein Background:**Gene ID:**

SIRPA/SIRPB1

Uniprot

P78324/Q5TFQ8

Synonyms:

SIRPA; BIT; MFR; MYD1; PTPNS1; SHPS1; SIRP; Tyrosine-protein phosphatase non-receptor type substrate 1; SHP substrate 1; SHPS-1; Brain Ig-like molecule with tyrosine-based activation motifs; Bit; CD172 antigen-like family member A; Inhibitory receptor SHP

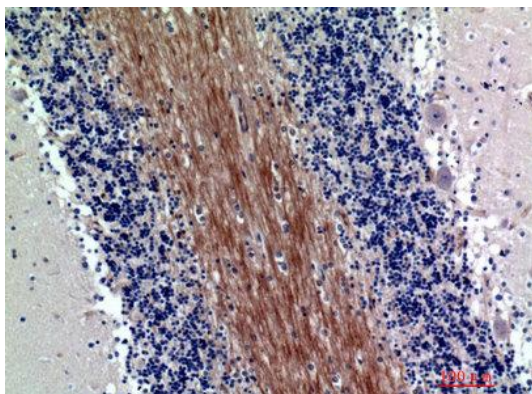
Immunogen:

Synthesized peptide derived from the Internal region of human SIRP- α ; 1/ β ; 1.

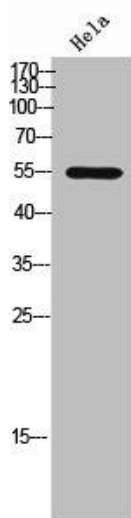
Storage:

Liquid in PBS containing 50% glycerol, 0.5% BSA and 0.02% sodium azide.

Product Images



Immunohistochemical analysis of paraffin-embedded human-brain, antibody was diluted at 1:200.



Western Blot analysis of HeLa cells using SIRP-alpha 1/ beta 1 Polyclonal Antibody.