

PLXNC1 Antibody



PACO06911

Product Information

Size:

50ug

Reactivity:

Human, Mouse, Rat

Source:

Rabbit

Isotype:

IgG

Applications:

ELISA, WB

Recommended dilutions:

ELISA:1:10000, WB:1:500-1:2000

Protein Background:**Gene ID:**

PLXNC1

Uniprot

O60486

Synonyms:

PLXNC1; VESPR; Plexin-C1; Virus-encoded semaphorin protein receptor; CD232

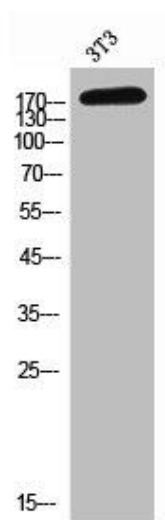
Immunogen:

Synthesized peptide derived from the Internal region of human CD232.

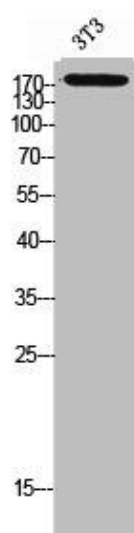
Storage:

Liquid in PBS containing 50% glycerol, 0.5% BSA and 0.02% sodium azide.

Product Images



Western Blot analysis of NIH-3T3 cells using CD232 Polyclonal Antibody.



Western Blot analysis of 3T3 cells using CD232 Polyclonal Antibody.