

# PVR Antibody



PACO06912

---

## Product Information

**Size:**

50ug

**Reactivity:**

Human, Mouse, Rat

**Source:**

Rabbit

**Isotype:**

IgG

**Applications:**

ELISA, WB

**Recommended dilutions:**

ELISA:1:10000, WB:1:500-1:2000

**Protein Background:****Gene ID:**

PVR

**Uniprot**

P15151

**Synonyms:**

PVR; PVS; Poliovirus receptor; Nectin-like protein 5; NECL-5; CD155

**Immunogen:**

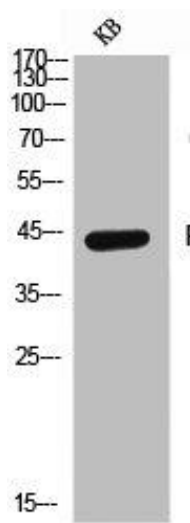
Synthesized peptide derived from the Internal region of human CD155.

**Storage:**

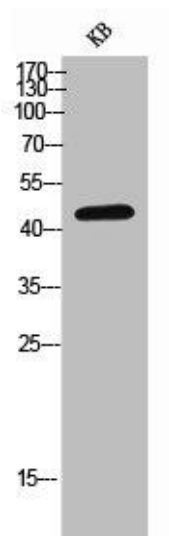
Liquid in PBS containing 50% glycerol, 0.5% BSA and 0.02% sodium azide.

## Product Images

---



Western Blot analysis of KB cells using CD155 Polyclonal Antibody.



Western Blot analysis of KB cells using CD155 Polyclonal Antibody.