

CD180 Antibody



PACO06913

Product Information

Size:

50ug

Reactivity:

Human, Mouse, Rat

Source:

Rabbit

Isotype:

IgG

Applications:

ELISA, WB

Recommended dilutions:

ELISA:1:10000, WB:1:500-1:2000

Protein Background:**Gene ID:**

CD180

Uniprot

Q99467

Synonyms:

CD180; LY64; RP105; CD180 antigen; Lymphocyte antigen 64; Radioprotective 105 kDa protein; CD180

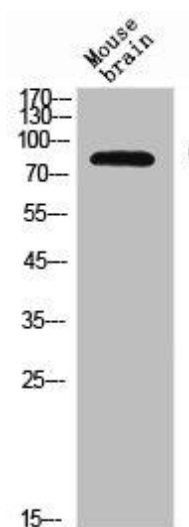
Immunogen:

Synthesized peptide derived from the Internal region of human CD180.

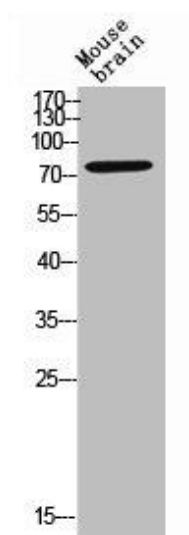
Storage:

Liquid in PBS containing 50% glycerol, 0.5% BSA and 0.02% sodium azide.

Product Images



Western Blot analysis of mouse brain cells using CD180 Polyclonal Antibody.



Western Blot analysis of MOUSE-BRAIN cells using CD180 Polyclonal Antibody.